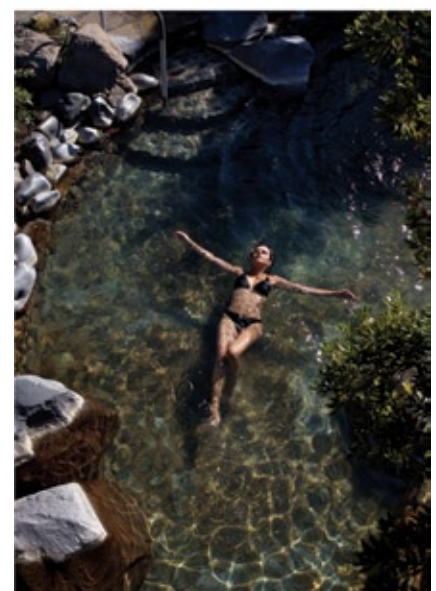
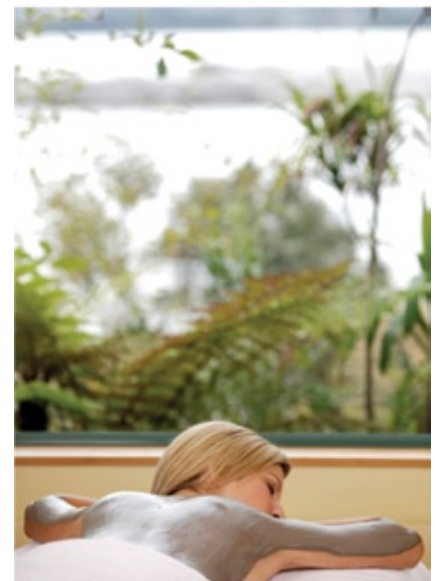


# Polynesian Spa Quick Facts

<b>Overview</b>	<ul style="list-style-type: none"><li>• New Zealand's leading international spa.</li><li>• Voted a World Top Ten Spa (thermal/ natural/ medical spas) by Conde Nast Traveller 2004-2007, 2009.</li></ul>
<b>Activity/Attraction</b>	<ul style="list-style-type: none"><li>• Hot mineral bathing and spa therapies.</li></ul>
<b>Outlook</b>	<ul style="list-style-type: none"><li>• On the lakeside overlooking Lake Rotorua.</li></ul>
<b>History</b>	<ul style="list-style-type: none"><li>• Over 125 years of hot mineral bathing, with the first Government bath house opening on this site in 1882.</li></ul>
<b>Thermal Water</b>	<ul style="list-style-type: none"><li>• 2 natural hot mineral springs supply renowned therapeutic acidic water to the Priest Spa, and soothing alkaline water to the other pools.</li></ul>
<b>Hot Mineral Pools</b>	<ul style="list-style-type: none"><li>• 26 pools in four areas for clients to choose from: deluxe, adult, private or family. 14 have views of Lake Rotorua. There is also 1 large freshwater chlorinated family pool.</li></ul>
<b>Spa Therapies</b>	<ul style="list-style-type: none"><li>• An array of enticing spa therapies and hydro spa therapies is available in 10 spa therapy rooms including two dual therapy rooms. ½ hour, 1 hour and 1½ hour appointments offered. Appointments essential.</li></ul>
<b>Other Facilities</b>	<ul style="list-style-type: none"><li>• Spa Essentials store, and Hot Springs Café.</li></ul>
<b>Natural &amp; Healthy</b>	<ul style="list-style-type: none"><li>• Natural and healthy hot mineral spring water. Native NZ flora featured. Natural NZ ingredients in spa therapies and many retail spa body products Healthy light cuisine.</li></ul>
<b>Extra information</b>	<ul style="list-style-type: none"><li>• Bathing suits, towels, and lockers are available for hire. No access is available from any of the four pool areas to other pool areas. Wheelchair access. Non-smoking facility. An all-weather attraction.</li></ul>
<b>Rates</b>	<ul style="list-style-type: none"><li>• Current retail rates available on: <a href="http://www.polynesianspa.co.nz">www.polynesianspa.co.nz</a>. Wholesale rates available upon request to <a href="mailto:info@polynesianspa.co.nz">info@polynesianspa.co.nz</a>.</li></ul>
<b>Location</b>	<ul style="list-style-type: none"><li>• Central Rotorua - 2 minutes walk to closest hotels (Millennium Hotel and Sudima Hotel Lake Rotorua). 5 minutes walk to town. 5 minutes drive to other major Rotorua hotels and accommodation.</li></ul>
<b>Opening Hours</b>	<ul style="list-style-type: none"><li>• 8am to 11pm every day - last pool entry 10.15pm (spa therapies: 9am-8pm every day).</li></ul>
<b>Contact Details</b>	<ul style="list-style-type: none"><li>• Lakeside, Hinemoa Street, PO Box 40, Rotorua 3040, New Zealand.</li><li>• Phone: +64 7 348 1328</li><li>• Fax: +64 7 348 9486</li><li>• Email: <a href="mailto:info@polynesianspa.co.nz">info@polynesianspa.co.nz</a></li></ul>
<b>Website</b>	<ul style="list-style-type: none"><li>• <a href="http://www.polynesianspa.co.nz">www.polynesianspa.co.nz</a></li></ul>



**A warm welcome awaits at Polynesian Spa!**